



Haus A

Haus B

Parz. 10 Bündentalweg

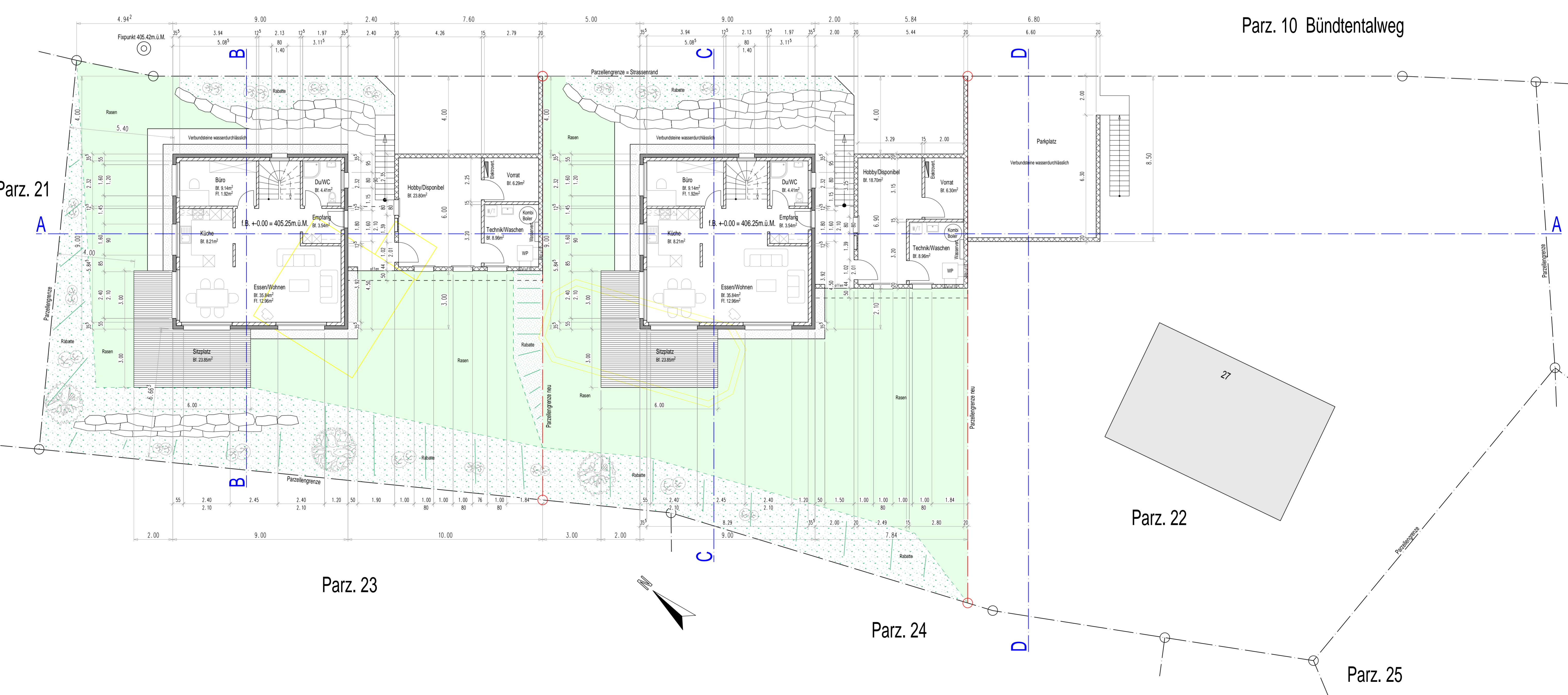
Parz. 21

Parz. 22

Parz. 23

Parz. 24

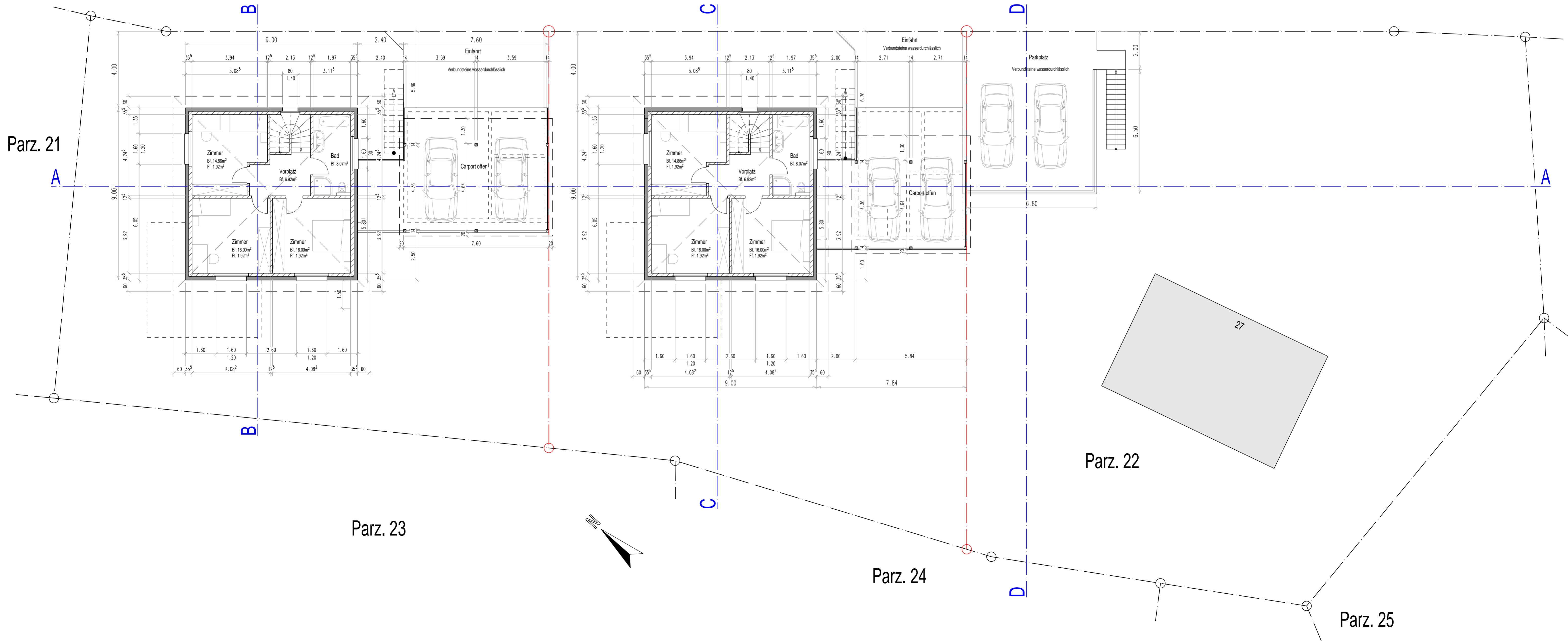
Parz. 25



Haus A

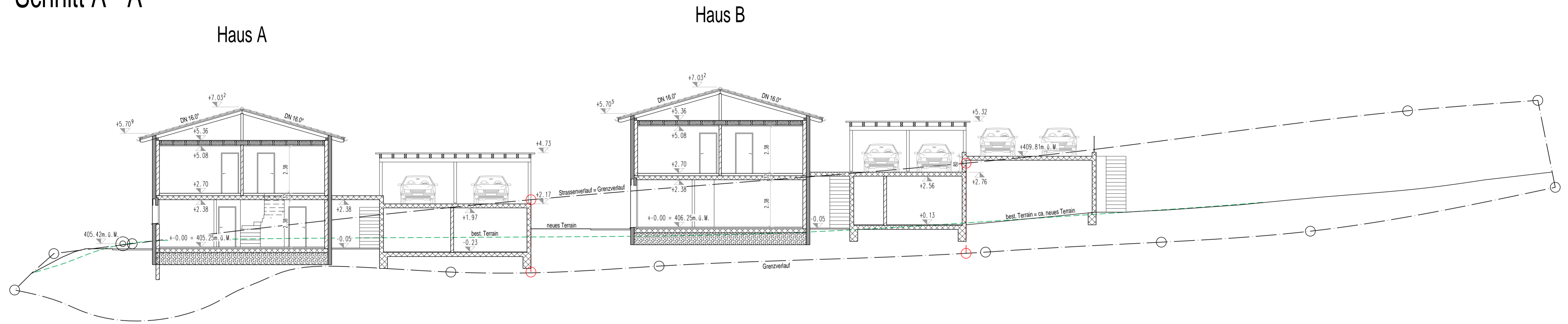
Haus B

Parz. 10 Bündentalweg

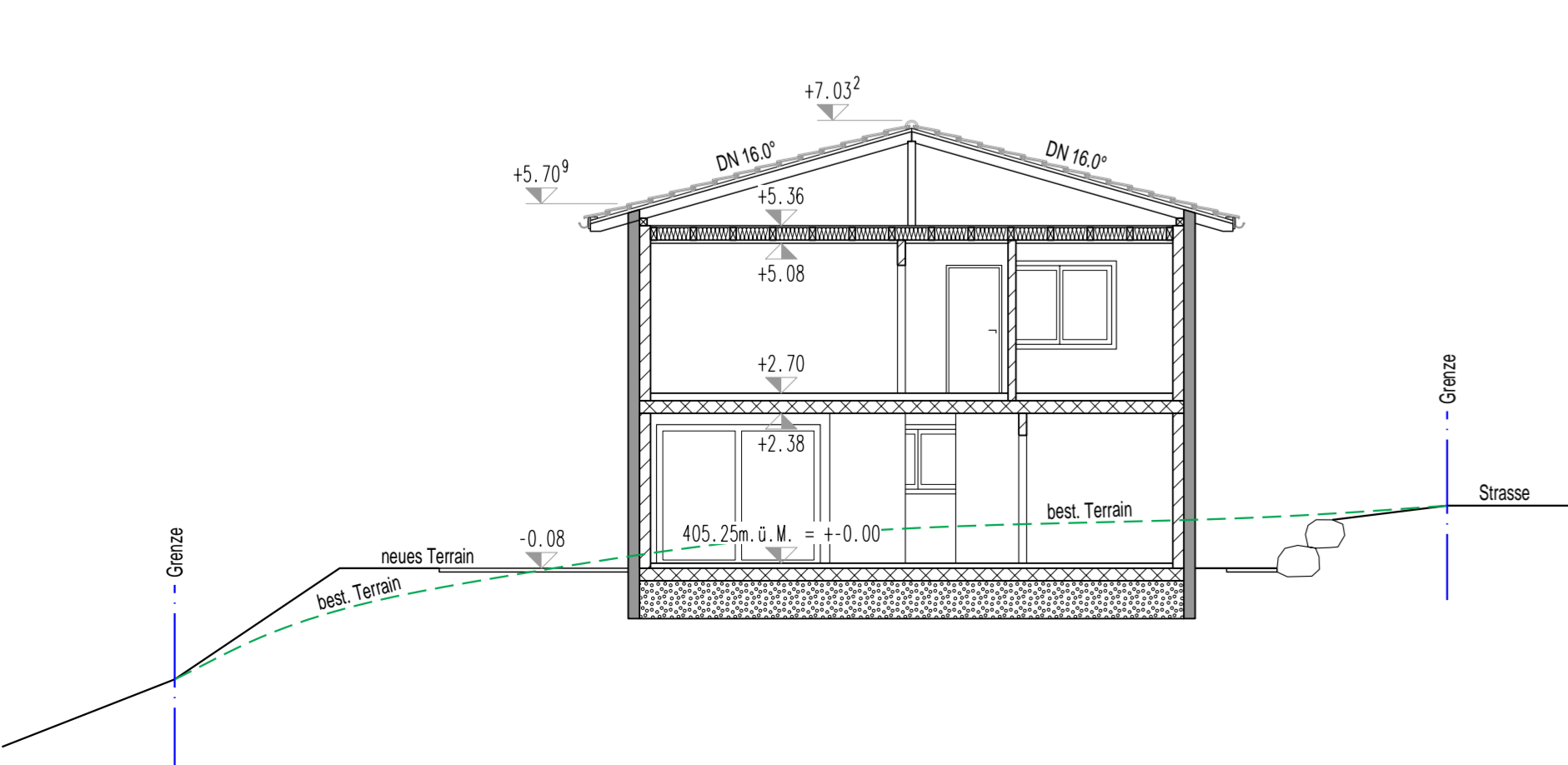




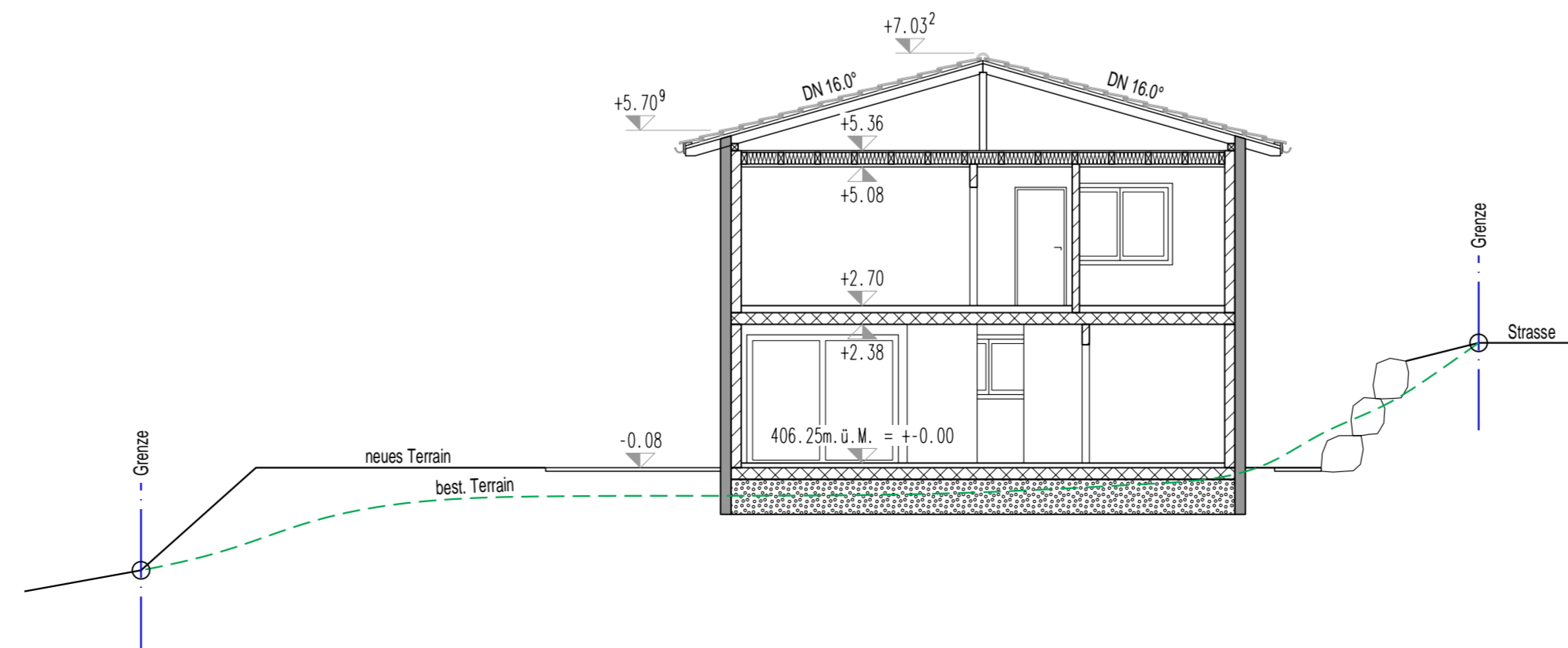
# Schnitt A - A



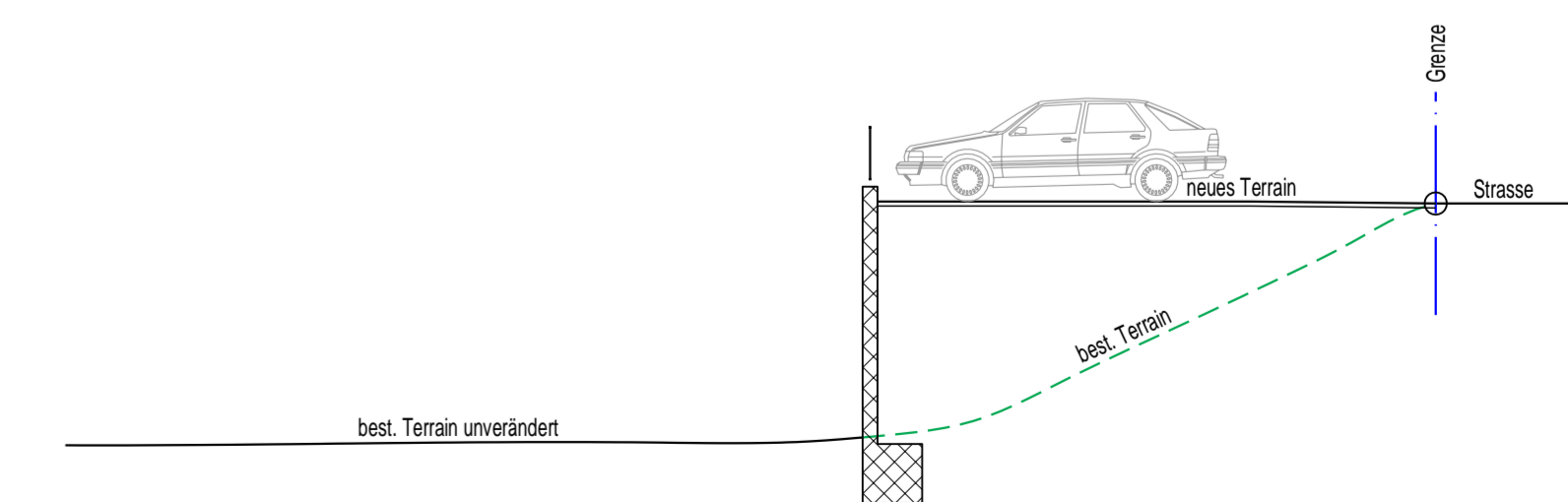
# Schnitt B - B



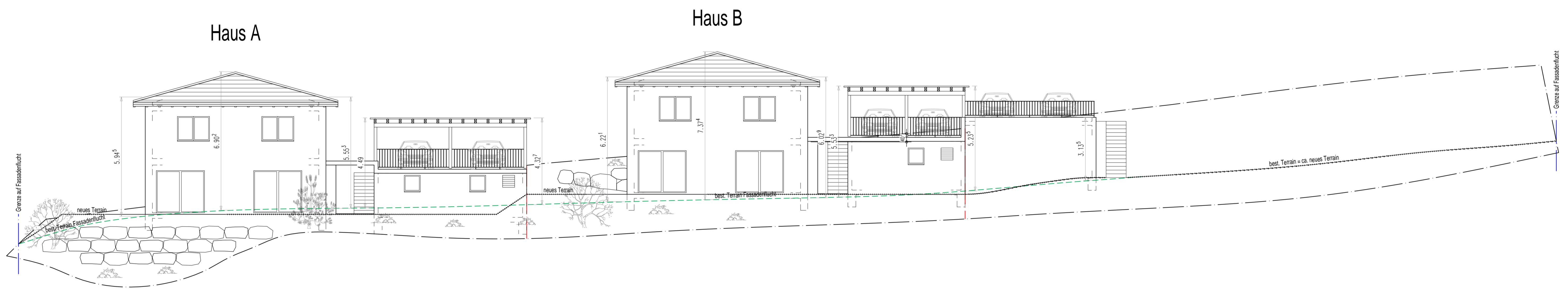
# Schnitt C - C



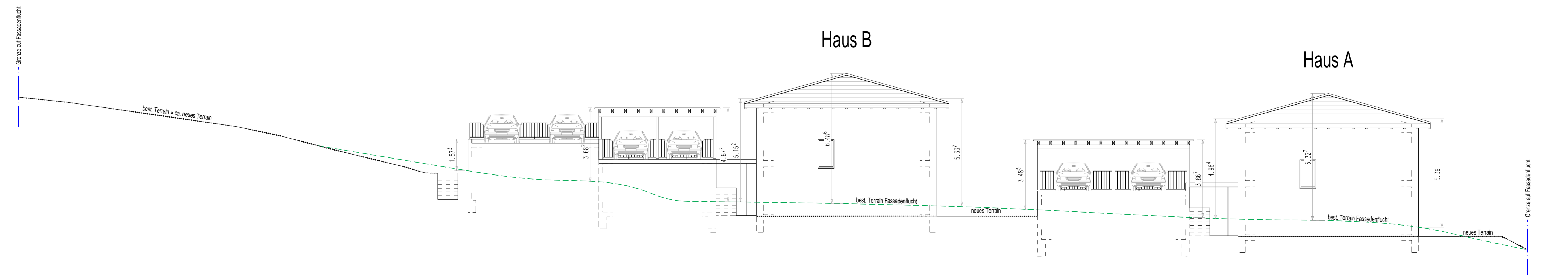
# Schnitt D - D



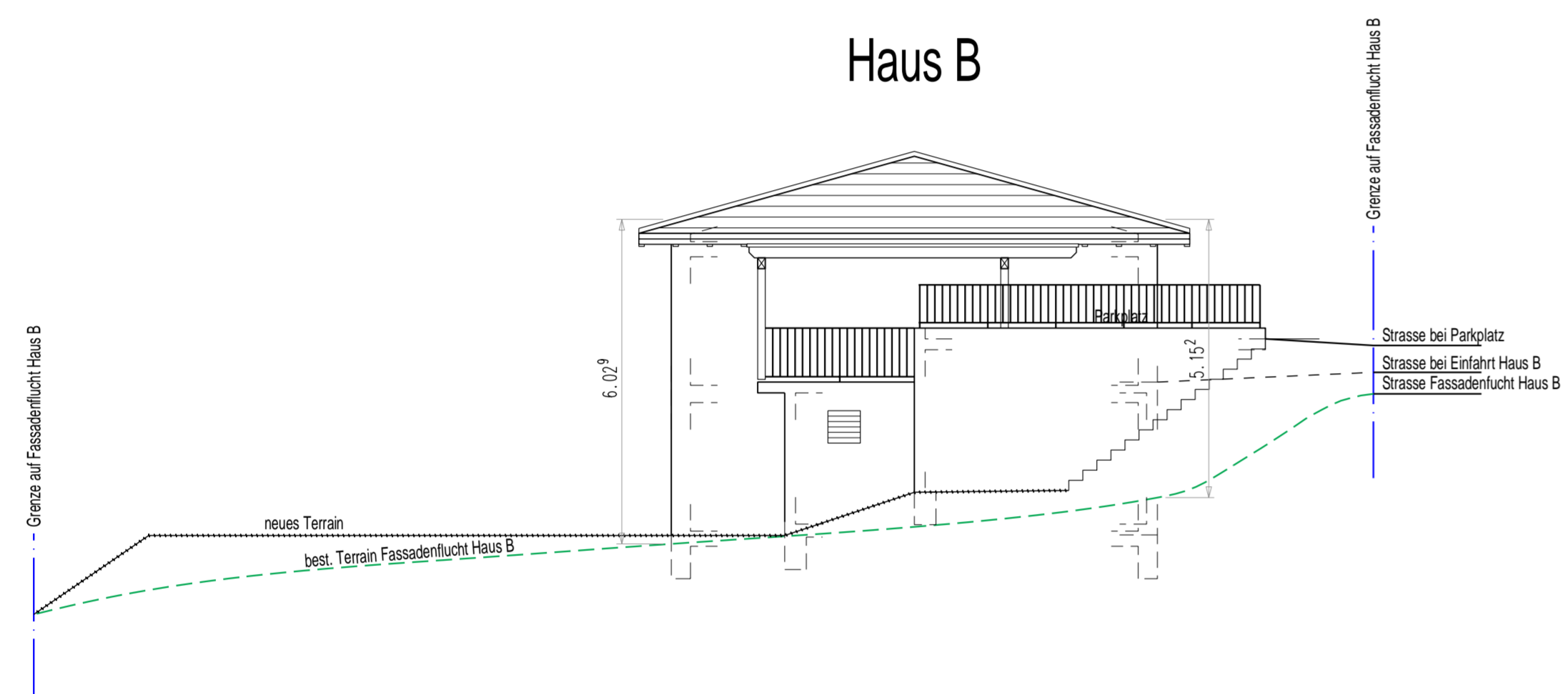
# Ansicht Süd-West



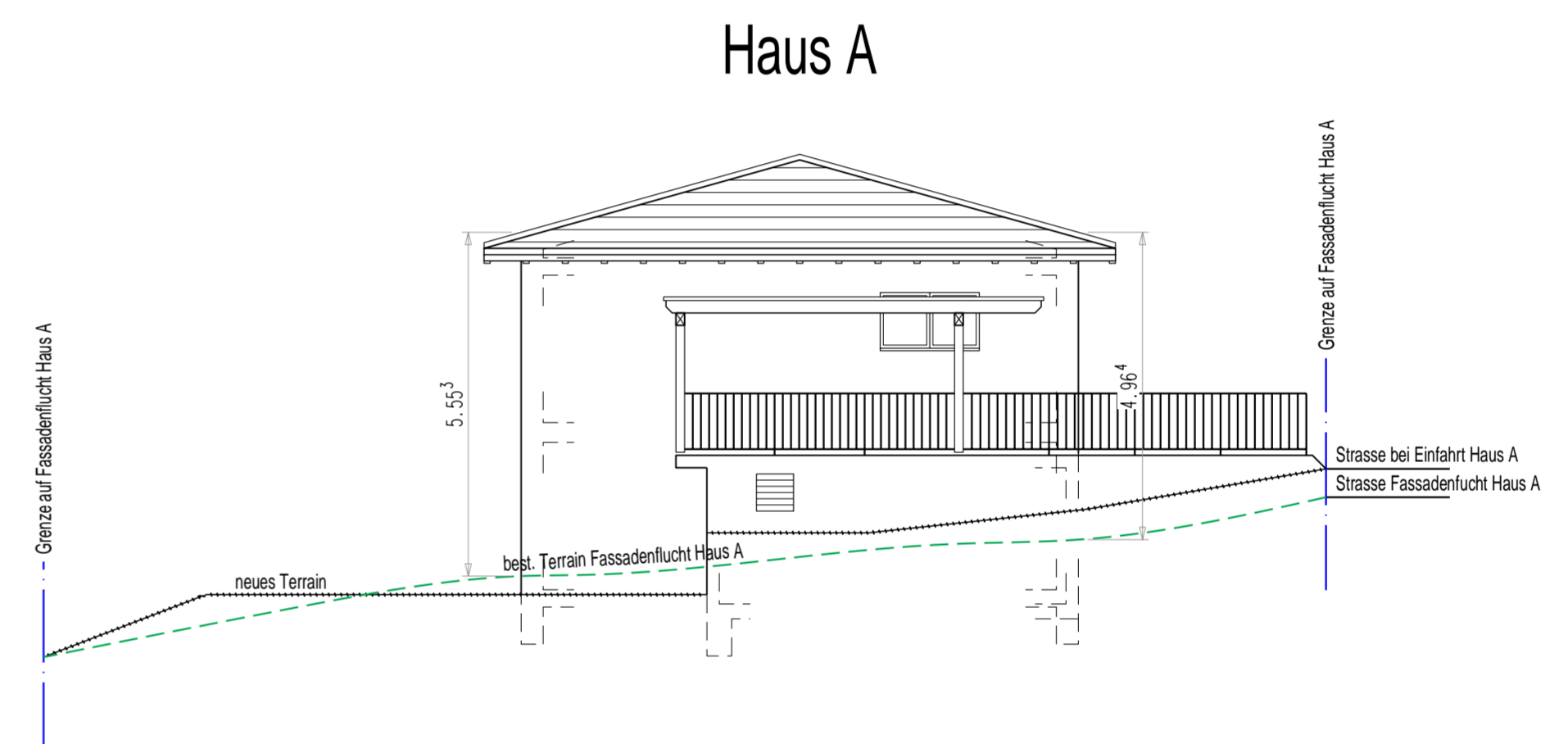
# Ansicht Nord-Ost



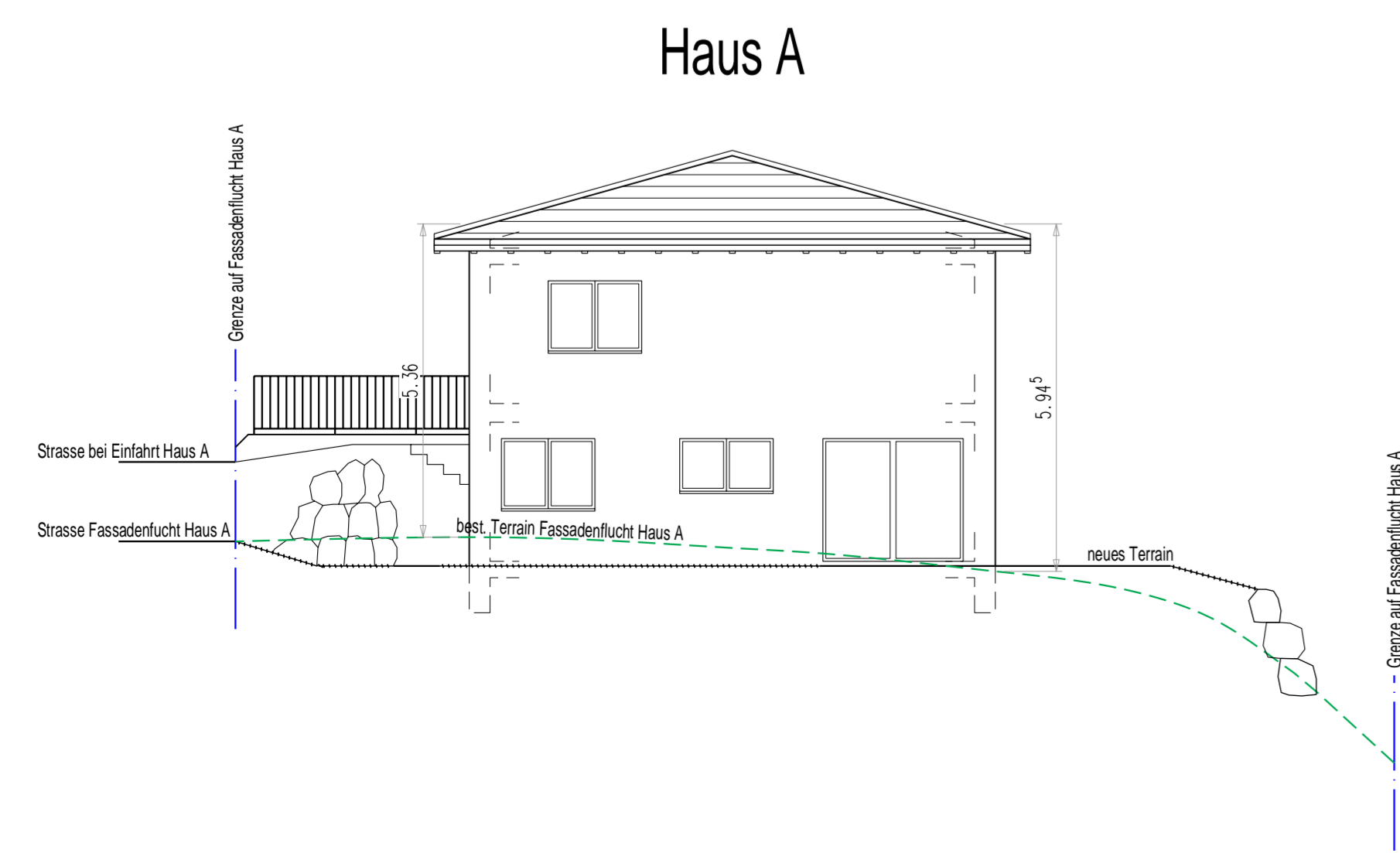
# Ansicht Süd-Ost



# Ansicht Süd-Ost



# Ansicht Nord-West



# Ansicht Nord-West

