

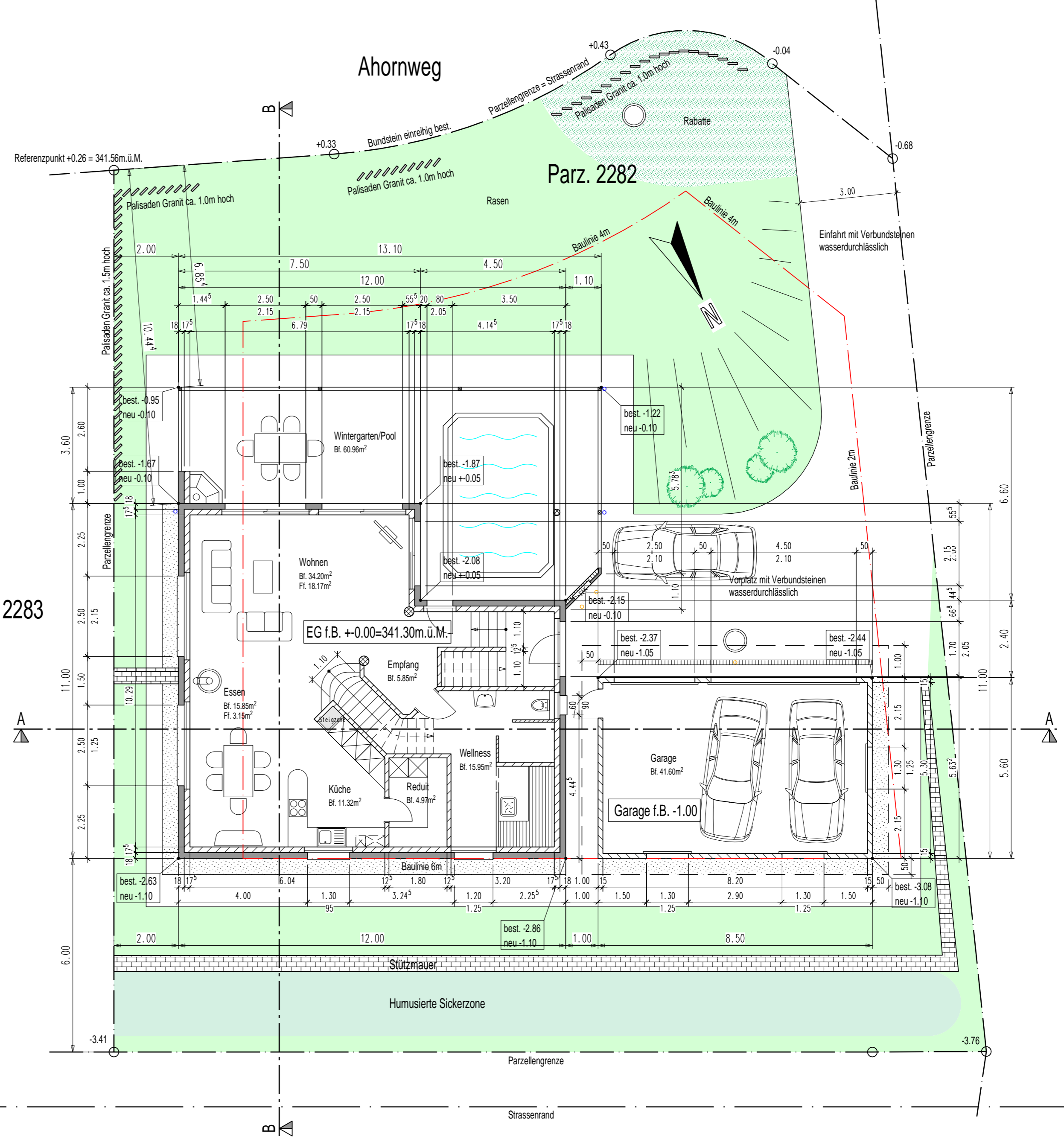
Kantonstrasse K292

Ahornweg

Parz. 2282

Parz. 2283

Kantonsstrasse K292



Referenzpunkt +0.26 = 341.56m.ü.M.

+0.33

+0.43

-0.04

-0.68

3.60

2.60

1.00

2.25

2.15

2.50

1.50

11.00

2.50

1.25

2.25

2.25

6.00

-3.41

2.00

12.00

1.00

6.00

-3.76

13.10

12.00

7.50

4.50

1.10

1.44<sup>5</sup>

2.50

2.15

2.50

2.15

2.50

2.15

2.50

2.15

2.50

2.15

2.50

2.15

2.50

2.15

2.50

2.15

2.50

2.15

2.50

2.15

2.50

2.15

2.50

2.15

2.50

2.15

2.50

2.15

2.50

2.15

2.50

2.15

2.50

2.15

2.50

2.15

2.50

2.15

2.50

2.15

2.50

2.15

2.50

2.15

2.50

2.15

2.50

2.15

2.50

2.15

2.50

2.15

2.50

2.15

2.50

2.15

2.50

2.15

2.50

2.15

2.50

2.15

2.50

2.15

2.50

2.15

2.50

2.15

2.50

2.15

2.50

2.15

2.50

2.15

2.50

2.15

2.50

2.15

2.50

2.15

2.50

2.15

2.50

2.15

2.50

2.15

2.50

2.15

2.50

2.15

2.50

2.15

2.50

2.15

2.50

2.15

2.50

2.15

2.50

2.15

2.50

2.15

2.50

2.15

2.50

2.15

2.50

2.15

2.50

2.15

2.50

2.15

2.50

2.15

2.50

2.15

2.50

2.15

2.50

2.15

2.50

2.15

2.50

2.15

2.50

2.15

2.50

2.15

2.50

2.15

2.50

2.15

2.50

2.15

2.50

2.15

2.50

2.15

2.50

2.15

2.50

2.15

2.50

2.15

2.50

2.15

2.50

2.15

2.50

2.15

2.50

2.15

2.50

2.15

2.50

2.15

2.50

2.15

2.50

2.15

2.50

2.15

2.50

2.15

2.50

2.15

2.50

2.15

2.50

2.15

2.50

2.15

2.50

2.15

2.50

2.15

2.50

2.15

2.50

2.15

2.50

2.15

2.50

2.15

2.50

2.15

2.50

2.15

2.50

2.15

2.50

2.15

2.50

2.15

2.50

2.15

2.50

2.15

2.50

2.15

2.50

2.15

2.50

2.15

2.50

2.15

2.50

2.15

2.50

2.15

2.50

2.15

2.50

2.15

2.50

2.15

2.50

2.15

2.50

2.15

2.50

2.15

2.50

2.15

2.50

2.15

2.50

2.15

2.50

2.15

2.50

2.15

2.50

2.15

2.50

2.15

2.50

2.15

2.50

2.15

2.50

2.15

2.50

2.15

2.50

2.15

2.50

2.15

2.50

2.15

2.50

2.15

2.50

2.15

2.50

2.15

2.50

2.15

2.50

2.15

2.50

2.15

2.50

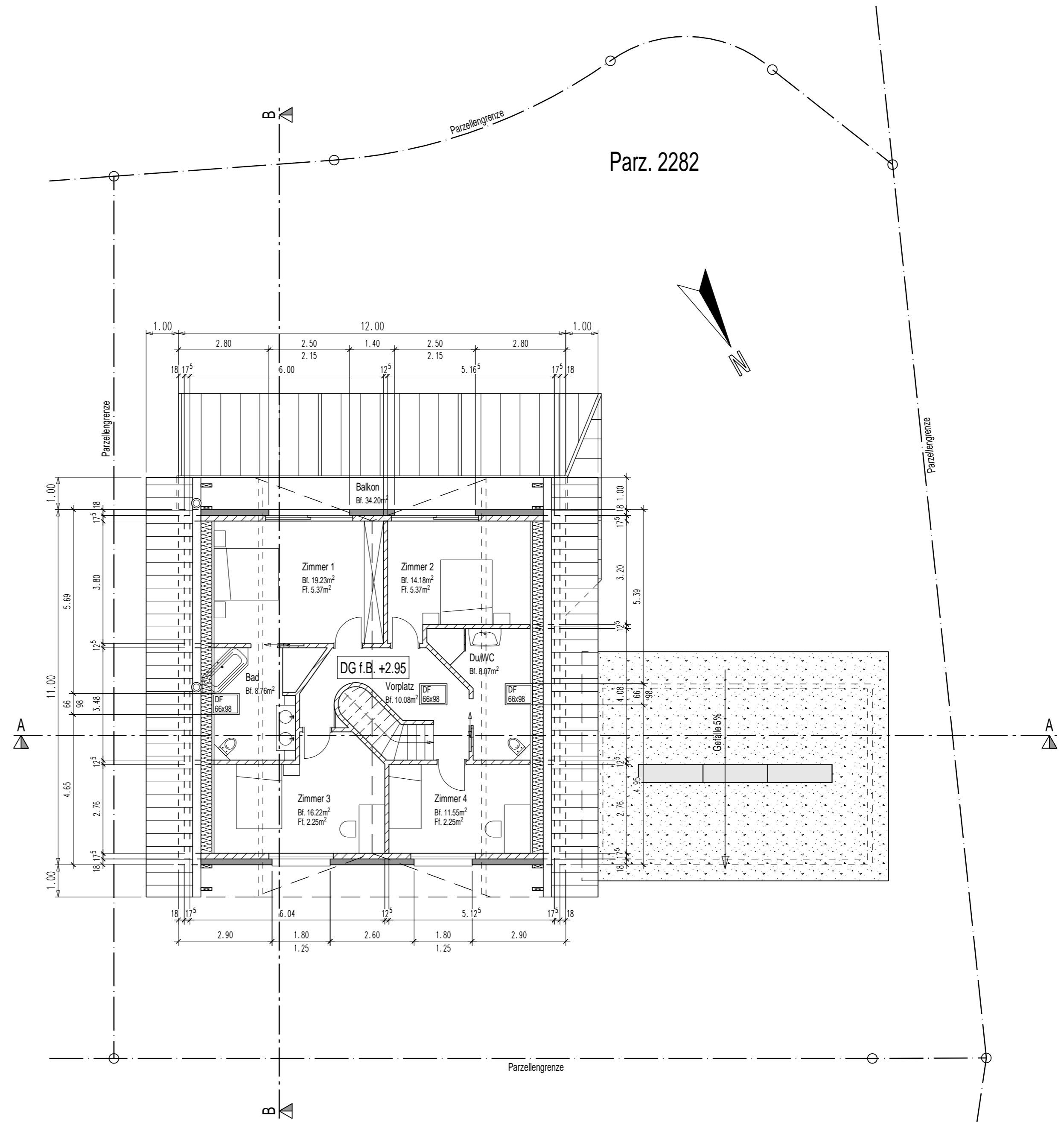
2.15

2.50

2.15

2.50

2.15



# Schnitt A-A

## Dachaufbau von Innen:

- Täferdecke 15mm
- Lattenrost 22mm
- Dampfbremse
- Sparrenlage mit Mineralwolle 200mm
- Holzweichfaserplatte 60mm
- Unterdachfolie
- Konterlatung 60mm
- Dachlattung 24mm
- Tonziegel

## Bodenaufbau EG-DG von unten:

- Gipsdecke 10mm
- Beton 280mm
- Trittschallisolierung 2x20mm
- Unterlagsboden 70mm
- Bodenbelag 10mm

## Bodenaufbau UG-EG von unten:

- Farbanstrich
- Beton 250mm
- Trittschallisolierung 2x20mm
- Unterlagsboden 70mm
- Bodenbelag 10mm

## Bodenaufbau Erdreich-UG von unten:

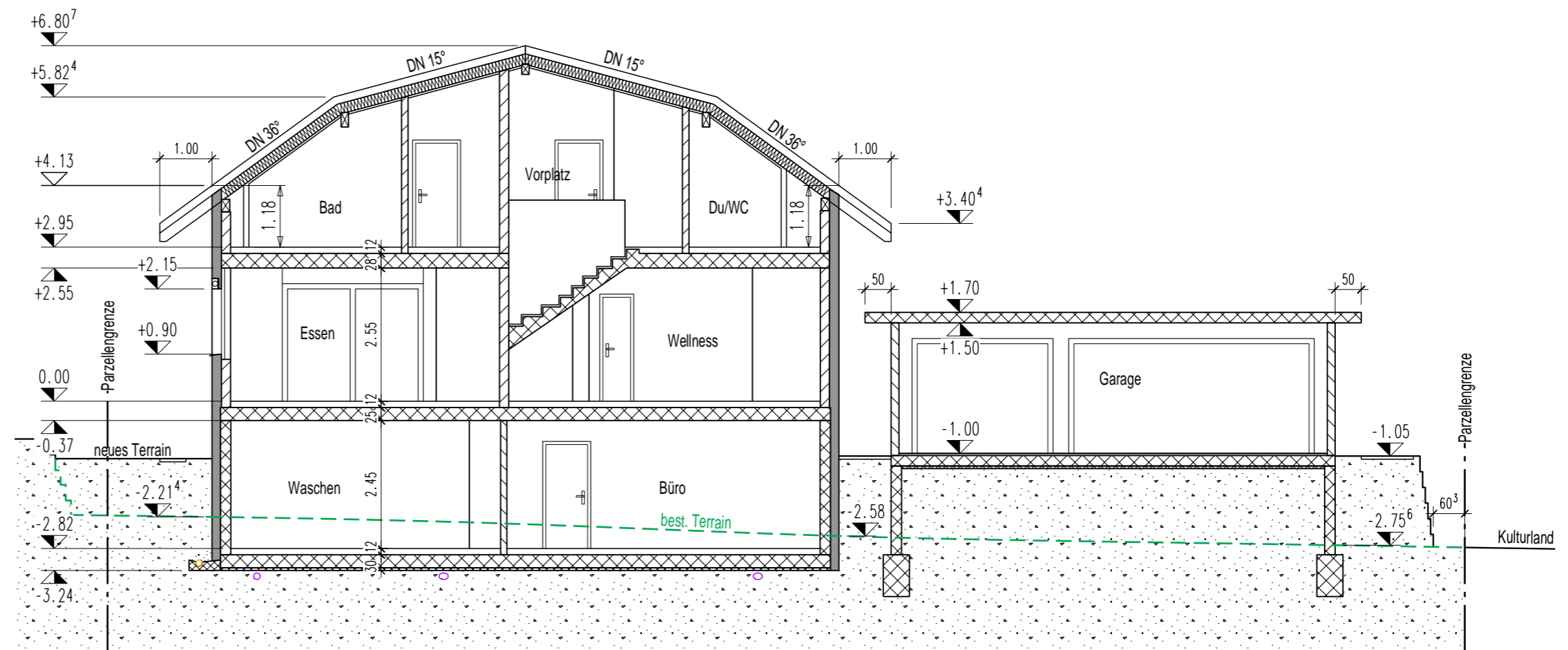
- Magerbeton 50mm
- Beton 250mm
- Trittschallisolierung 2x20mm
- Unterlagsboden 70mm
- Bodenbelag 10mm

## Wandaufbau EG, DG von innen:

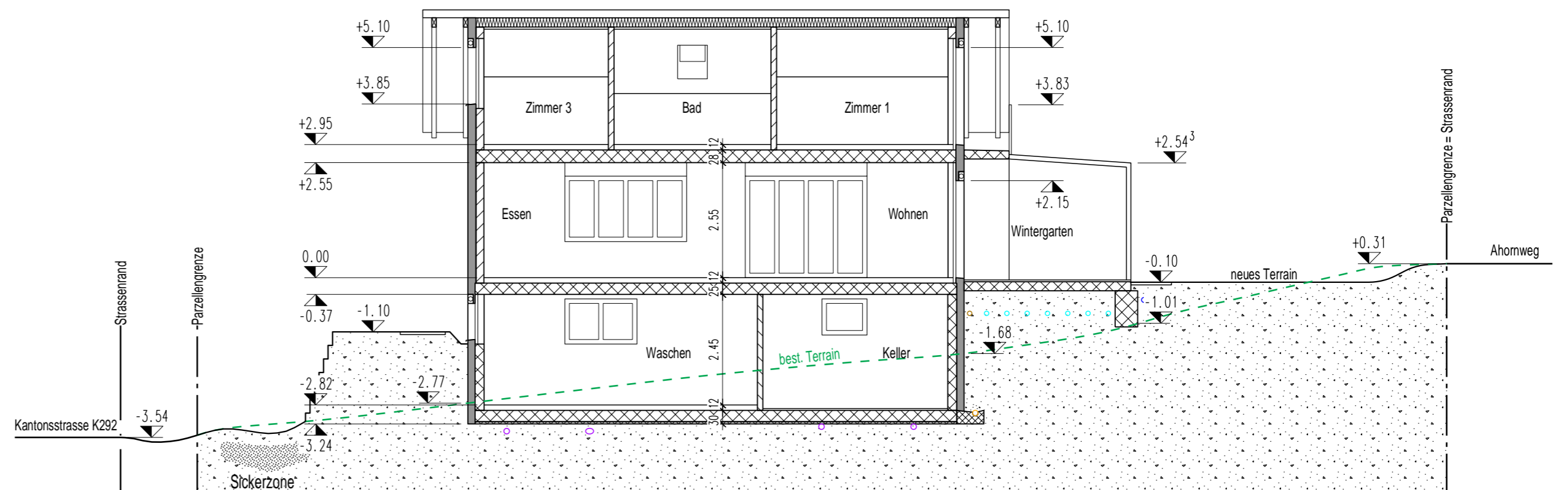
- Grundputz mit Abrieb 10mm
- Beton Backstein 175mm
- Aussendämmung Steinwolle 180mm
- Grundputz mit Abrieb 6mm

## Wandaufbau UG von innen:

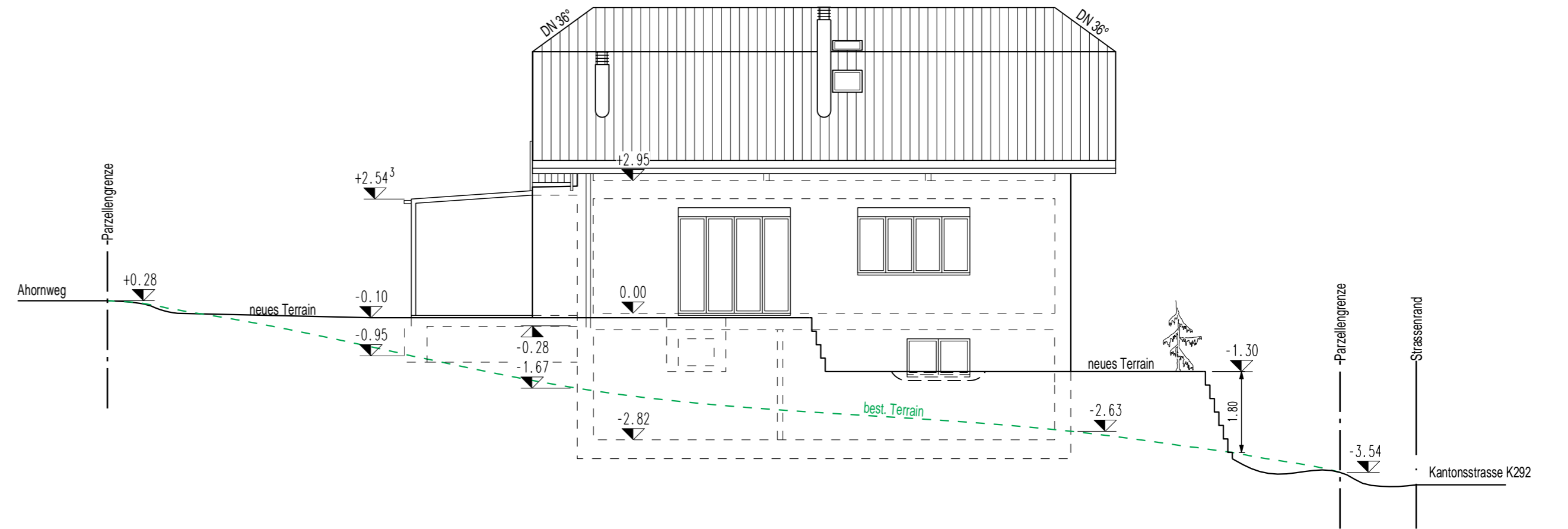
- Farbanstrich
- Beton 200mm
- Aussendämmung XPS 160mm
- Grundputz mit Abrieb 6mm



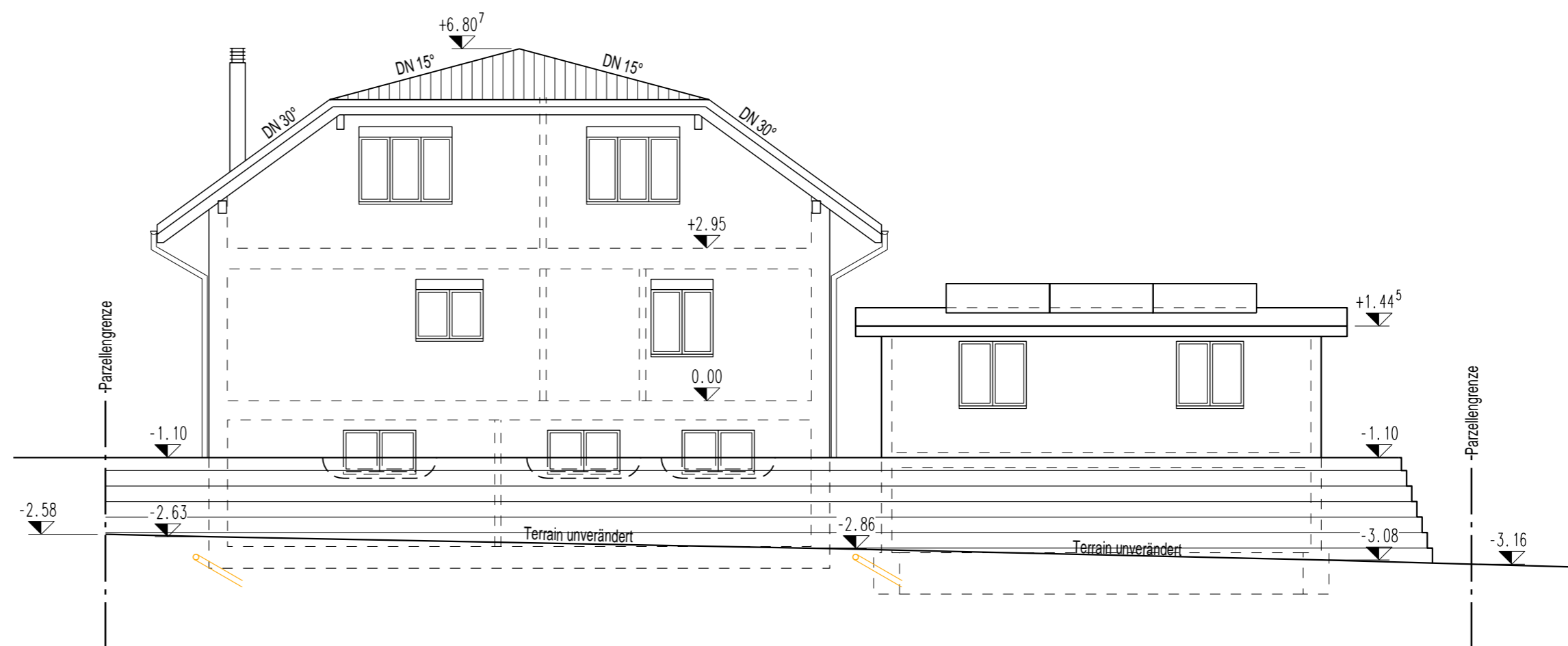
# Schnitt B-B



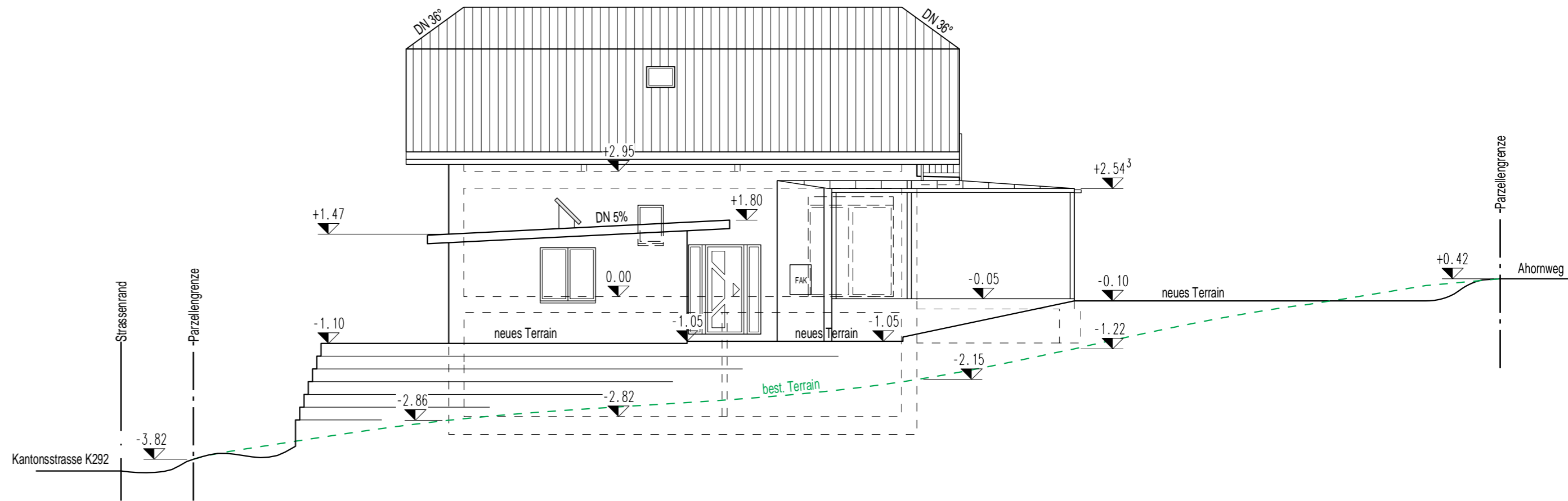
# Ansicht Ost



# Ansicht Nord



# Ansicht West



# Ansicht Süd

